

QBit 3

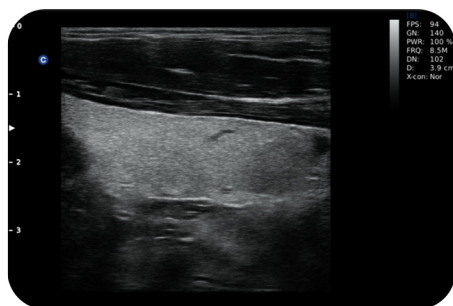
Slim · Smart · Significant · Streamlined



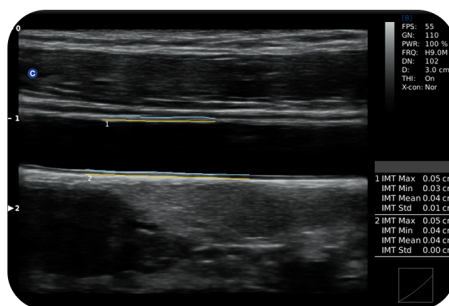


CHISON QBit 3, a slim console color doppler system, offers the ideal patient care with its easy mobility, smart features, significant performance and streamlined workflow, to strength the clinical confidence and speed the diagnostic decision.

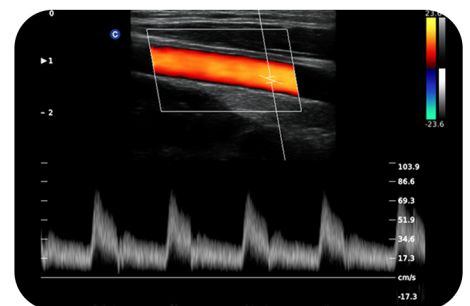
- 15" LED with 90° rotatable
- Slim design for tiny room
- Demo features for pre-experience
- Full screen to enlarge the image area
- HIP graf and image rotation for professional orthotics diagnosis
- Rich smart features for excellent clinical value: B/BC, Super Needle, Triplex, Auto IMT, 2D Steer, Trapezoidal imaging



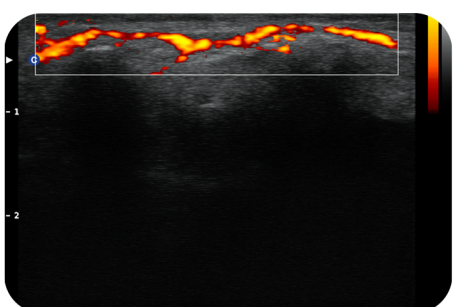
Thyroid, B Mode



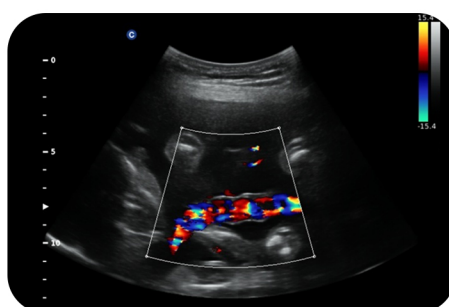
Carotid, Auto IMT



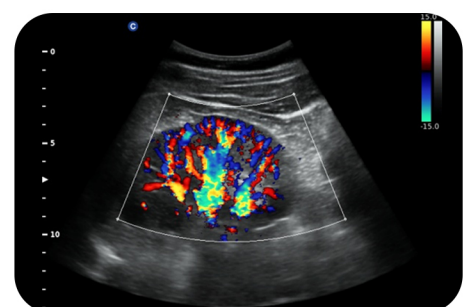
Carotid, PW Mode



Finger Vessel, C Mode



Umbilical Cord, C Mode



Kidney, C Mode