

# i3

## 4D Color Doppler

Fast • Light • Quiet • Smart



# Better Technologies



The revolutionary i3 provides you outstanding 2D images and fast 4D volume images, while the streamlined workflow makes your busy practices much easier and more efficient.

# Better



## Light

Light probe  
Releases doctors from  
scanning fatigue

## Smart

Smart function  
The latest technologies:  
compound, i-Image , SRA, etc.  
provide superb image

## Quiet

Quiet probe  
Vibration-free & Noise -free  
probe allows better  
care for mother and fetus

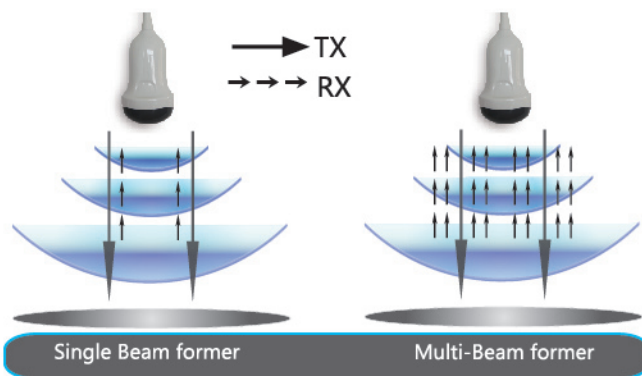
## Fast

Fast speed  
4D volume rate reveals  
fetal movement in real  
time

## 4T

# Advanced Imaging Technologies

## Multi-beam former technology



- Enhance signal processing speed
- Enhance time resolution
- Improve spatial resolution

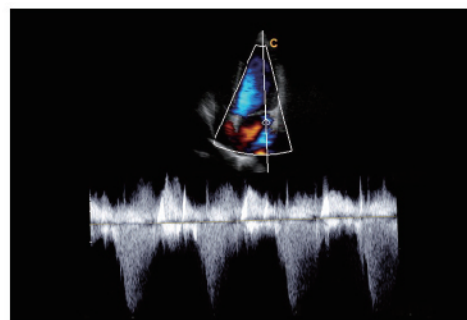
## Virtual HD

- The latest innovation in real-time 4D with powerful turbo imaging engine.
- Greatly strengthen the bond between mother and fetus.
- With moveable virtual light source.

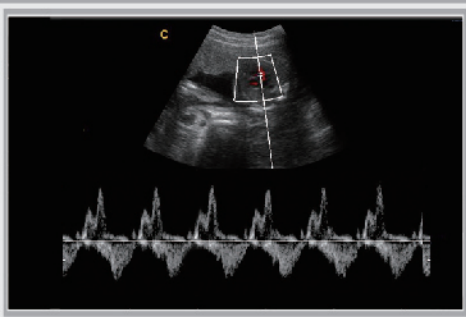


## Continuous Wave (CW) Doppler

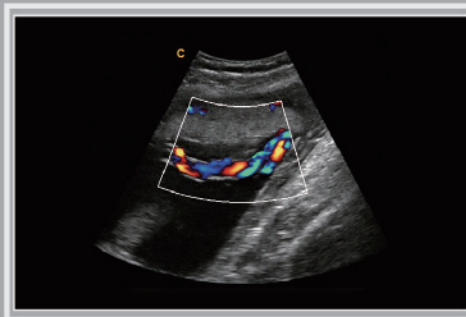
CW is absolutely necessary for cardiac ultrasound to detect blood flow with high velocity and help doctors diagnose with more clinical information.



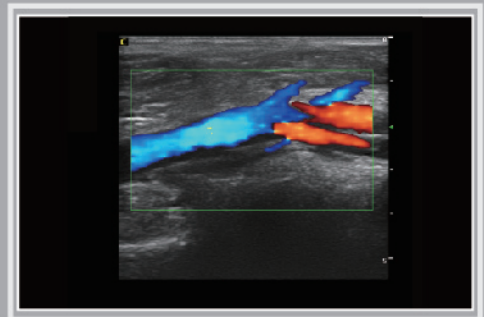
# Clinical Value and Applications



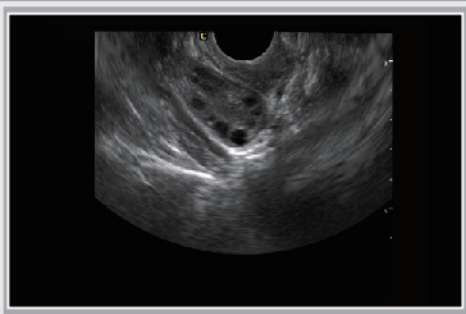
Fetal Heart, PW Mode



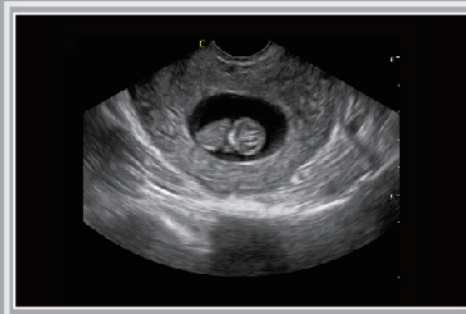
Umbilical Cord, CFM Mode



Popliteal Vein, CFM Mode



Ovary, B Mode



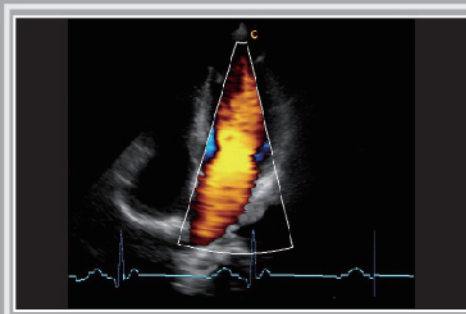
Early Pregnancy, B Mode



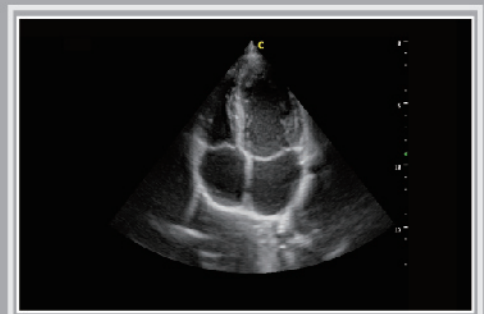
Fetal Face, 31 Weeks



Depth View



Four Chambers View, ECG



Apical 4 Chambers, B Mode

# Specifications

## Imaging modes

- B, 2B, 4B, B/M, M
- CFM
- PW Mode
- Power Doppler / Directional PD
- Trapezoidal
- Real-time 4D (Option)
- Chroma B/PW
- CW (Option)

## Probes

- Convex probe
- Linear probe
- Linear probe(60mm)
- Transvaginal probe
- Phased array probe
- Micro-Convex probe
- 4D Volume probe

## Image processing technology

- THI
- Speckle Reduction Algorithm (SRA)
- Compound technology
- i-Image : image optimization software

## Measurement & Report packages

- OB&GYN
- Vascular
- Urology
- Small parts
- Cardiac

## Widely Clinical Applications

- Abdominal
- Obstetrics
- Gynecology
- Cardiac
- Vascular and Small parts
- Pediatric
- Urology
- Musculoskeletal

## Standard configuration

Main unit, 19" LCD, 4 probe connectors, Hard disk (320GB), DVD-RW, 6 USB ports

## Options

- 3.5MHz-5.3MHz Convex probe
- 5.0MHz-12.0MHz Linear probe
- 4.0MHz-12.8MHz Linear probe (60mm)
- 4.0MHz-10.0MHz Transvaginal probe
- 4.0MHz-10.7MHz Transvaginal probe
- 2.5MHz-4.0MHz Phased array probe
- 4.0MHz-10.7MHz Micro-Convex probe
- 2.5MHz-6.4MHz Micro-Convex probe (adult Cardiac)
- 3.5MHz-8.0MHz Pediatric probe
- CW
- ECG
- 4D package: including 2.5MHz-5.3MHz 4D volume probe, 4D software and 4D hardware module
- Virtual HD , Depth View
- Video printer(SONY 897 , SONY 895), PC printer(HP1102 & HP251N & Canon selphy cp910)
- DICOM 3.0
- i-Image: image optimization software
- Biopsy kit: for convex, linear, TV probe

## CHISON MEDICAL IMAGING CO., LTD.

### Sales & Service Contact Address:

No. 9 Xin Hui Huan Road, New District, Wuxi, Jiang Su Province, CHINA214028

TEL: 0086-510-85310593 / 85310937

FAX: 0086-510-85310726

EMAIL: export@chison.com.cn

[www.chison.com](http://www.chison.com)

We reserve the right to make changes to this catalogue without prior notice  
Please contact our local dealer for the latest information.

Ei3 20150430